

# FLEXIBLE GROUPING

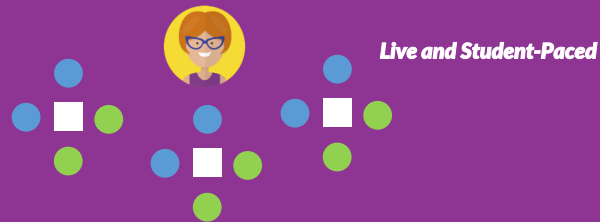


**LIVE NEARPOD LESSON**  
Teacher controls the pace of the lesson and move students along

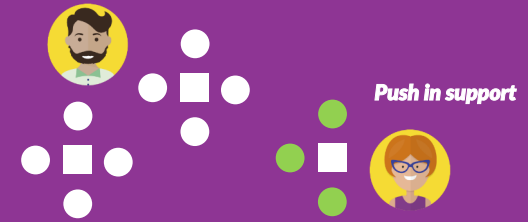
**STUDENT PACED NEARPOD LESSON**  
Students move through the lesson at their own pace

**NON-NEARPOD LESSON**  
Any teaching or interaction that occurs without Nearpod

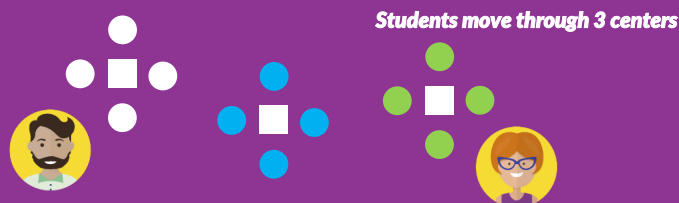
GENERAL CLASSROOM	
Fit	Use Nearpod for
Content Area Knowledge	Scaffolding Comprehensible Input
Low/High incidence	Differentiate Assessment
Sheltered with Mixed Levels	Vocabulary Building



PUSH IN/INTEGRATED/PULL OUT	
Fit	Use Nearpod for
Support Mainstream	Formative Assessments
Low-incidence	Strategic Pairing
ELs form groups/clusters	Personalized support/Preteaching



STATIONS/CENTERS	
Fit	Use Nearpod for
Small, manageable groups	Differentiate by modality/task
Easy to differentiate	Adjust amount/type of scaffolding
Accomplish more tasks	Diversify assessments



COTEACHING/TEAM TEACHING	
Fit	Use Nearpod for
Maintain Pacing	Duplicate/modify a lesson
Autonomy for both teachers	Diversify language task
Smaller, manageable groups	Alternate between mini-lessons

